

LAB THEATER

Lighting Equipment Inventory

Updated October 2014

	<u>LAMP & WATTAGE:</u>	<u>GEL FRAME</u>	<u>TOTAL:</u>	<u>USED IN</u>	<u>AVAILABLE:</u>	<u>NOTES:</u>
		<u>SIZE:</u>		<u>REP PLOT:</u>		
Luminaires:						
ETC Source 4 26°, 575w	575w HPL/575X	6.25"	26	21	5	No other lens tubes
PAR64 bodies, 1000w	1kw NSP, MFL, WFL	10"	58	36	22	
_lamps available: WFL, MFL, NSP (limited quantity of NSPs)						
_WFL lamps: ~34						
_MFL lamps: ~36						
_NSP lamps: ~16						
Kliegl 6" Fresnel, 500w	500w EHD	7"	6	6	0	Houselights 2 used as houselights - can be used elsewhere
Altman 6" Fresnel, 750w	750w BTN	7.5"	9	2	7	4 used as event specials - can be used elsewhere
Strand 8" Fresnel, 2kw	2kw BVW	10.15"	4	0	4	
Strand 8" Fresnel, 1kw	1kw BVT	10.15"	8	4	4	2 used for ASL lights
Altman 360Q, 6x9, 575w	575w GLA	7.5"	11	0	11	
Altman 360Q, 6x12, 575w	575w FLK/LL	7.5"	44	2	42	Interchangeable lens - requires
Altman 360Q, 6x12 w/ Iris, 575w	575w GLA	7.5"	2	0	2	
Altman 360Q, 6x16, 750w	575w FLK/LL	7.5"	9	0	9	Total # of 30 DEG & 40 DEG C'TRANS combined cannot exceed 37
Altman 360Q, 6x16 w/ Iris, 750w	575w FLK/LL	7.5"	1	0	1	
Colortran 5/50 bodies, 575w	750w EHG	7.5"	45	0	45	
_Maximum # of 40° Colortrans:			37			
_Maximum # of 30° Colortrans:			31			
_Maximum # of 20° Colortrans:			40			
_Maximum # of 15° Colortrans:			4			
Strand #2212 6x12 Lekolights	750w EHF	7.5"	12	0	12	
Strand 8x13 Lekolights	1kw FEL	10"	2	0	2	
Major 6x9 (non-axial)	750w EHF	6.5"	6	0	6	
Strand Iris 3-cell cyclight, 1kw/cell	1kw FFT	15.75"x12"	6	0	6	
Altman Ground Cyc (3-cell), 1kw/cell	1kw FHM	13" x 8.75"	8	0	8	
4-circ R40 striplights w/ trunions, 90w floods	90w Halogen Flood	5.62"	8	0	8	Typically used as US wall uplights
_no hanging hardware available for striplights						

LAB THEATER

Lighting Equipment Inventory

Updated October 2014

<u>LAMP & WATTAGE:</u>	<u>GEL FRAME</u> <u>SIZE:</u>	<u>TOTAL:</u>	<u>USED IN</u> <u>REP PLOT:</u>	<u>AVAILABLE:</u>	<u>NOTES:</u>
Accessories:					
A-size template holders for Source 4		4			
B-size template holders for Source 4		6			
A-size glass gobo holders for Source 4		2			
B-size glass gobo holders for Source 4		6			
B-size template holders for 360Q		24			
A-size template holders for Colortrans		12			
Irises for Colortrans		6			
Tophats, 7.5"		11			
Sidearms, 18"		34			
Control & Dimming:					
ETC Element console, 250 channels, 40 submasters			1		
_2 DMX512 outputs - no remote video node					
ETC MicroVision FX console, 125 channels			1		
_1 DMX512 output					
_NO LONGER SUITABLE FOR LONG PERFORMANCE RUNS					
L86 dimmer rack			1		
_138 2.4k dimmers, 2 6K dimmers					
_2 2.4k dimmers typically used for houselights					
_144 KW maximum draw (400A 3- phase), including houselights					
_6 hot pocket 120v A/C outlets					
_156 circuits available overstage (dimmers are NOT 1-to-1)					
DMX Isolated Repeater			1		
_1 input, 1 pass-through, 6 outputs					

LAB THEATER

Sound equipment inventory

updated May 12, 2016

cables XLR

50'	5
25'	4
20'	6
15'	1
10'	2
misc (IN THE AIR)	

adaptors

xlr F - TS	20'	1
xlr M-TRS		

TS cables

TS		
20'		1
10'		1

TS-bare wire 50' 1

Microphones/DI

SM 58	3
Audio tech mb2000L	1
BSS audio Active DI	1
Rapco DI	1

Couple TS/Rca cables

TRS - bare end	1
1/8 - 1/8 male- male	1
dual RCA	1
1/8- dual RCA	1
RCA - dual RCA	1

1 wireless lav transmitter

no receiver

Micstand

Tripod w boom	3
Short straight stand w boom	1
Straight stand	2
Boom arm	1 questionable
music stand	1

BOOTH GEAR

Console	1 allen and heath GL 2400
CD player 2 deck	1 american audio
EQ/DBx 2ch 31 band	1
EQ/Ashly 2 ch eq 31 band	1
FX unit/2 channel/lexicon MX200	1

SNAKE

1 28 channel snake 24 mic/4 ret

SPEAKER

QSC	6
sub	1
Mackie SRM 150 (powered)	1

LAB THEATER

Gobo Inventory

Size	Manufacturer #	Description	Quantity available
B	Colortran ??	Dense Leaves	7
B	GAM ??	Summer Leaves?	1
B	GAM	202 Church Window	2
B		204 Blinds	2
B	GAM	218 Realistic Leaves	7
Standard	GAM	223 Large Breakup	1
B	GAM	230 Cloud 7	2
B	GAM	246 Brick Wall	1
Standard	GAM	593 Diamonds	4
Standard	GAM	618 Trellis 2	1
B	GAM	622	8
B	GAM	636 Construction	4
Standard	GAM	662 Corrugated Breakup	2
B	GAM	709 Glass Brick	7
B	GAM	860	1
B	Rosco	831 Meshtone Bloud	1
B	Rosco	??238 Blobby breakup	1
B	Rosco	77090 Bars	1
B	Rosco	77102 Abstract Leaves	6
B		77141 Jacobian (Window)	2
A		77228 Trusswork 2	1
B		77407 Large Dapple	6
B		77563 Glass Brick	1
B		77702 Venetian Blind	1
B		77703 Double Hung Windows	1
B		77802 Stained Glass Composite	8
A		78253 Squirms Negative	12
B		79117 Dense Leaves 3	20

Lab Fall 2015 Rep

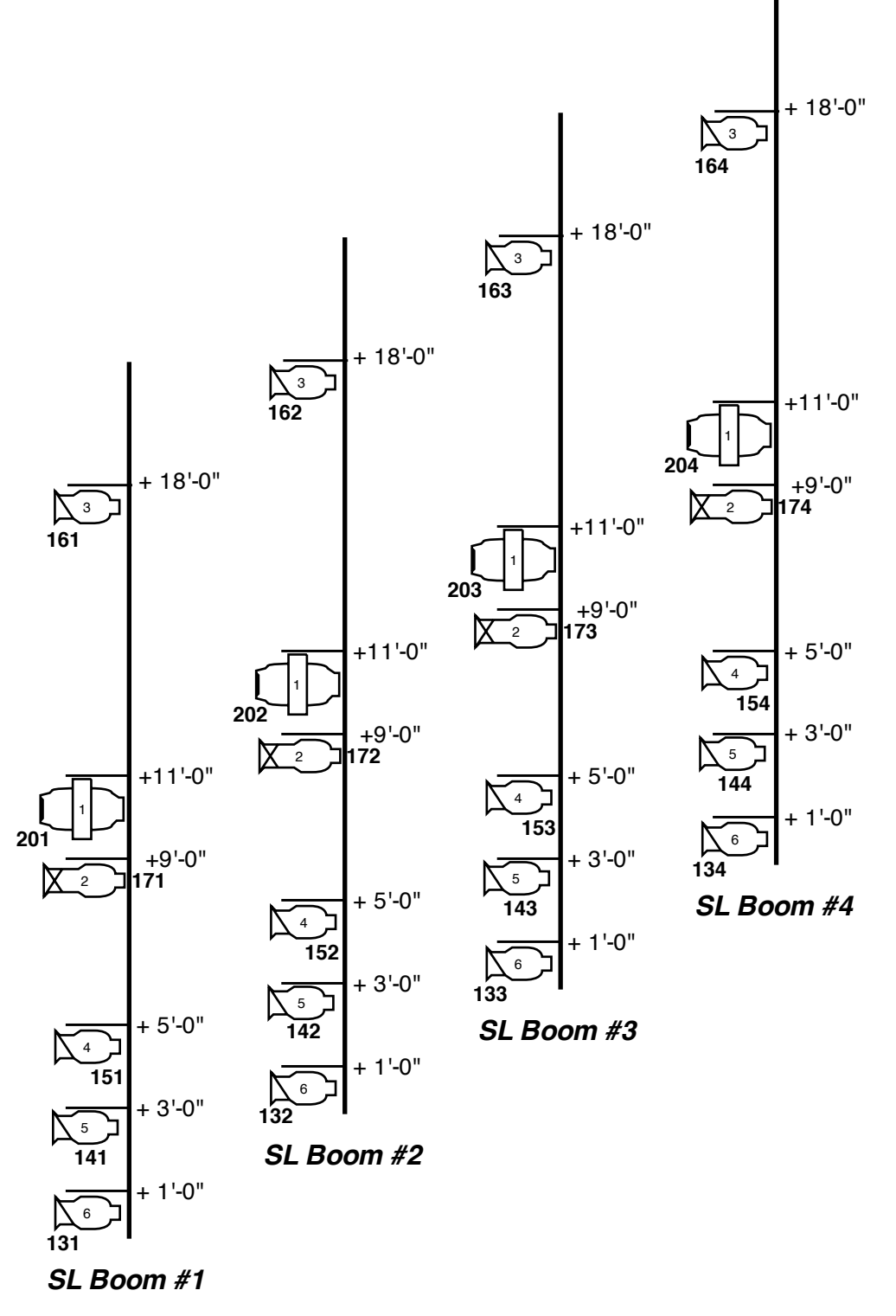
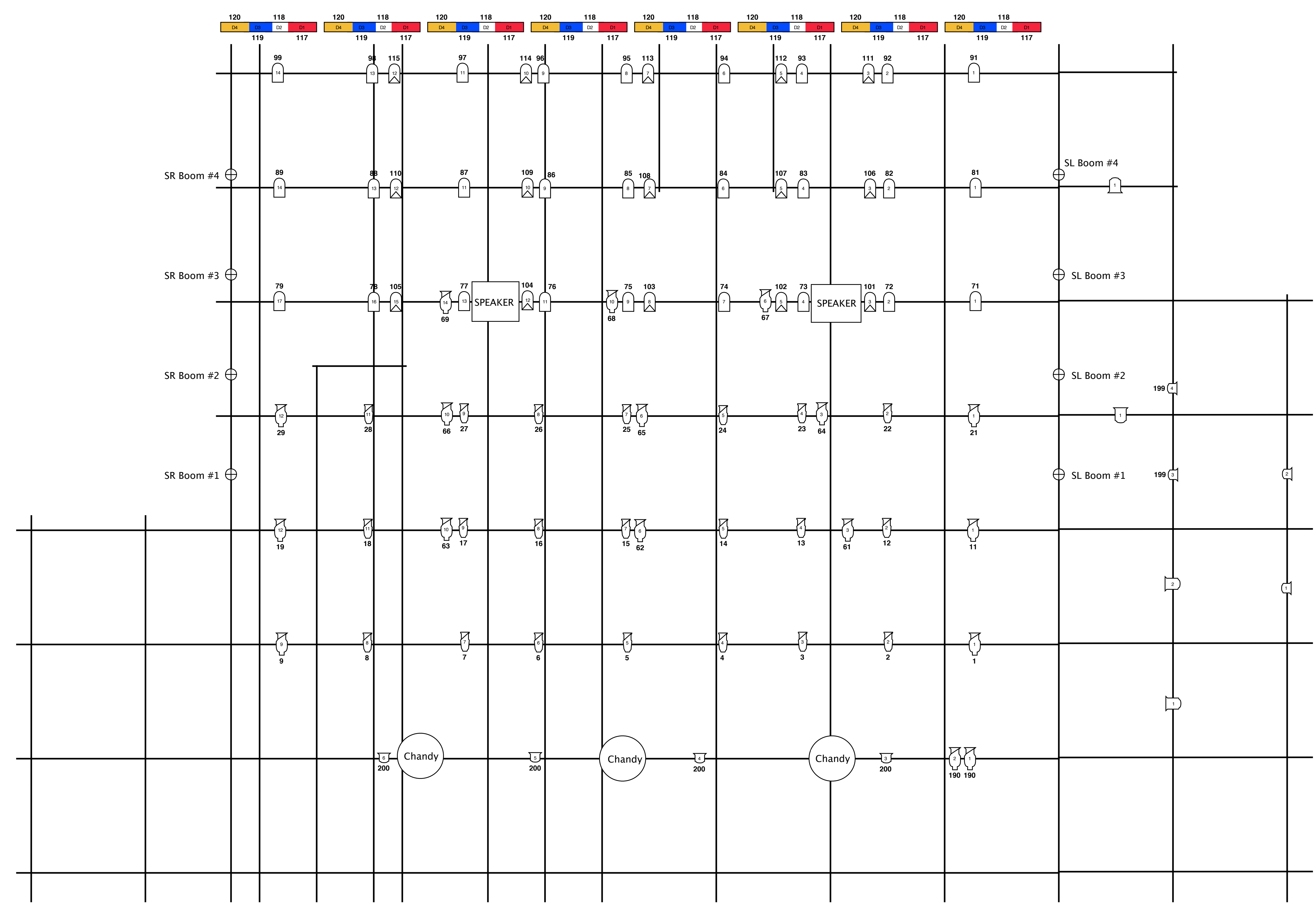
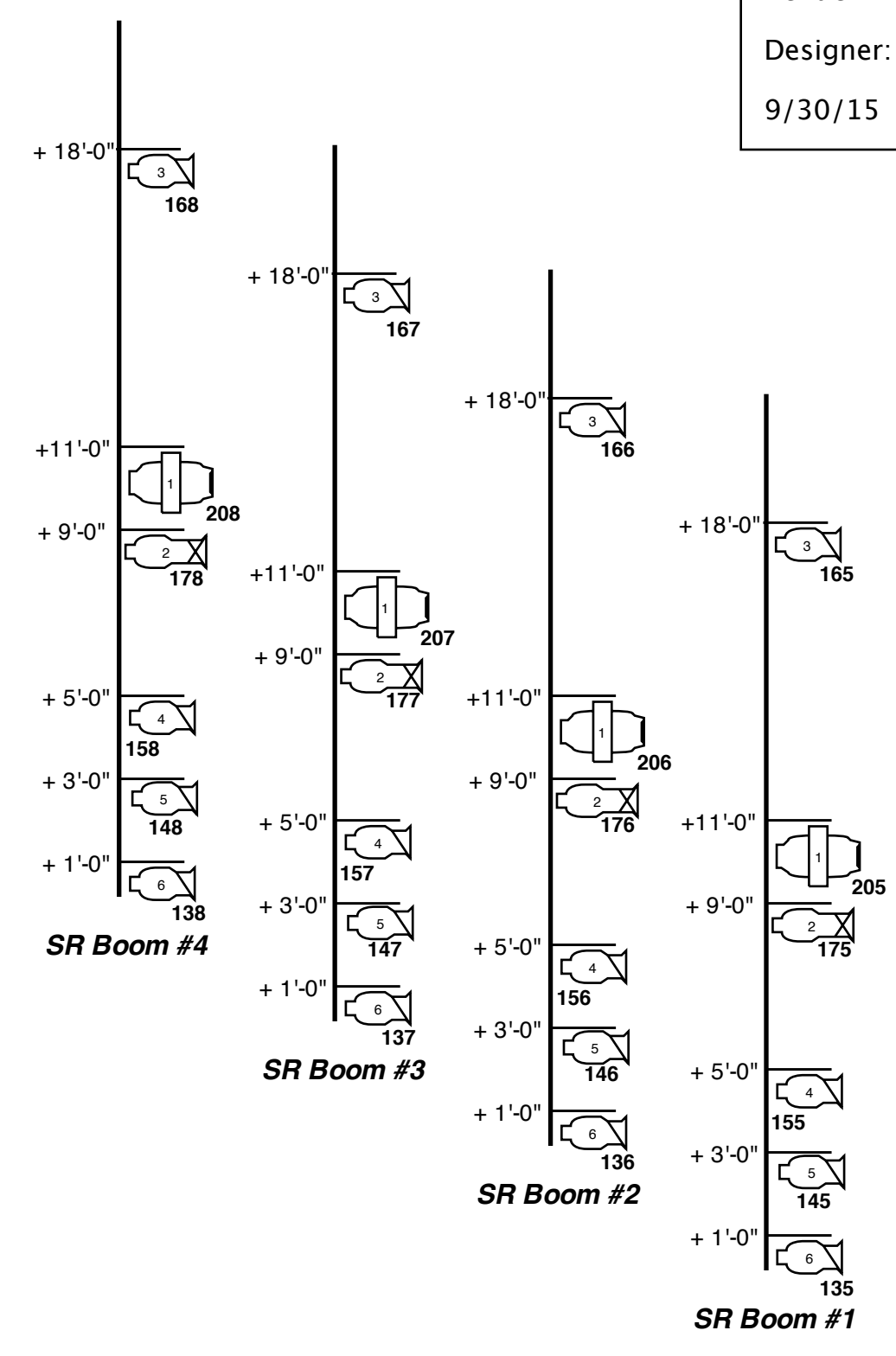
Venue: The Lab Theater

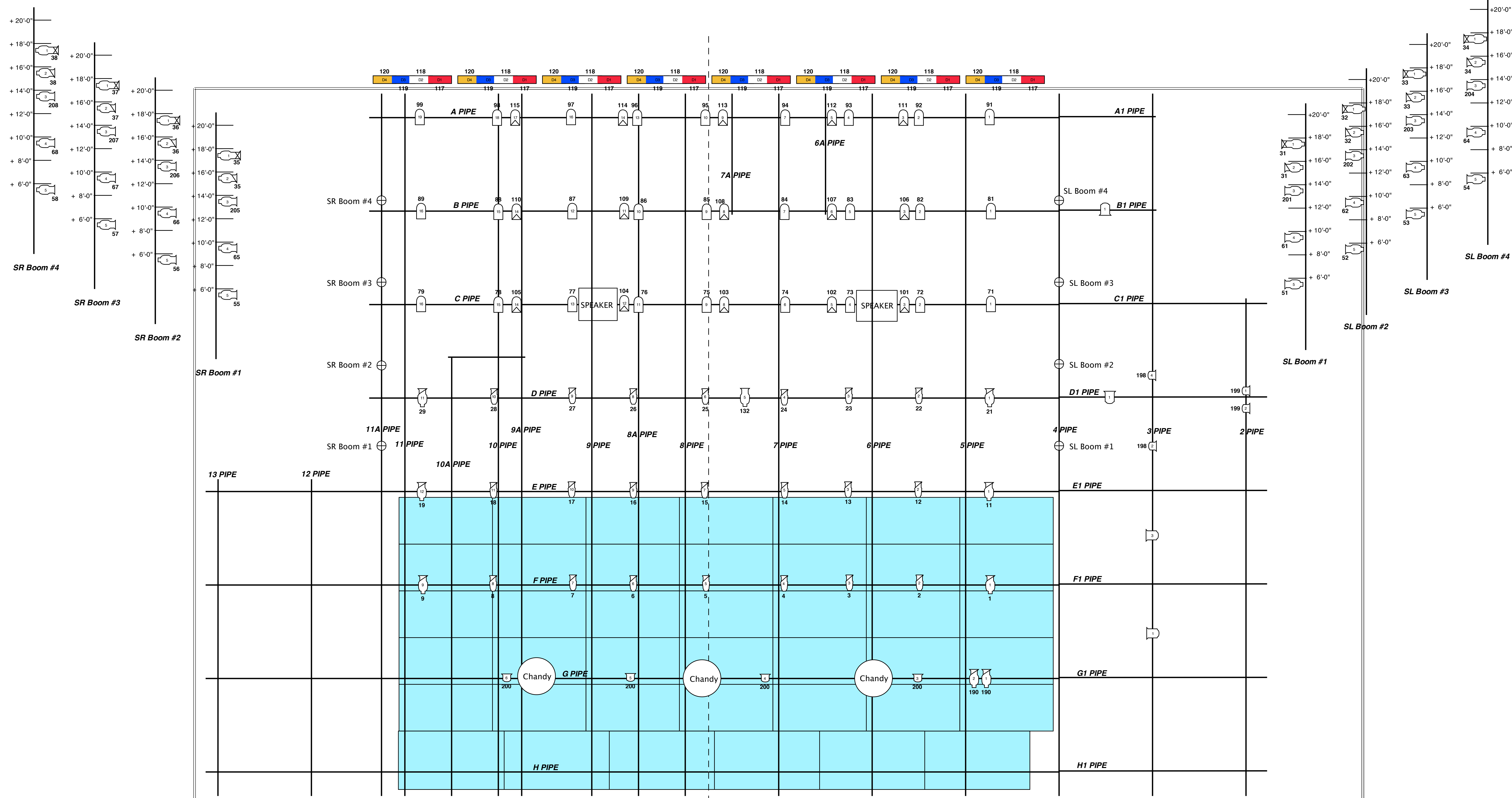
Designer:

9/30/15

Light Plot

Key





Rep Plot
 Venue: The Lab Theater
 Designer: Ray Steveson
 5/4/17

Light Plot

Taildown (below H Pipe)

Key			
	26" Source Four		6" Fres
	6x9		40°
	6x12		8" Fresnelite
	6x16		par64wfl
	par64mfl		strip
	Location		